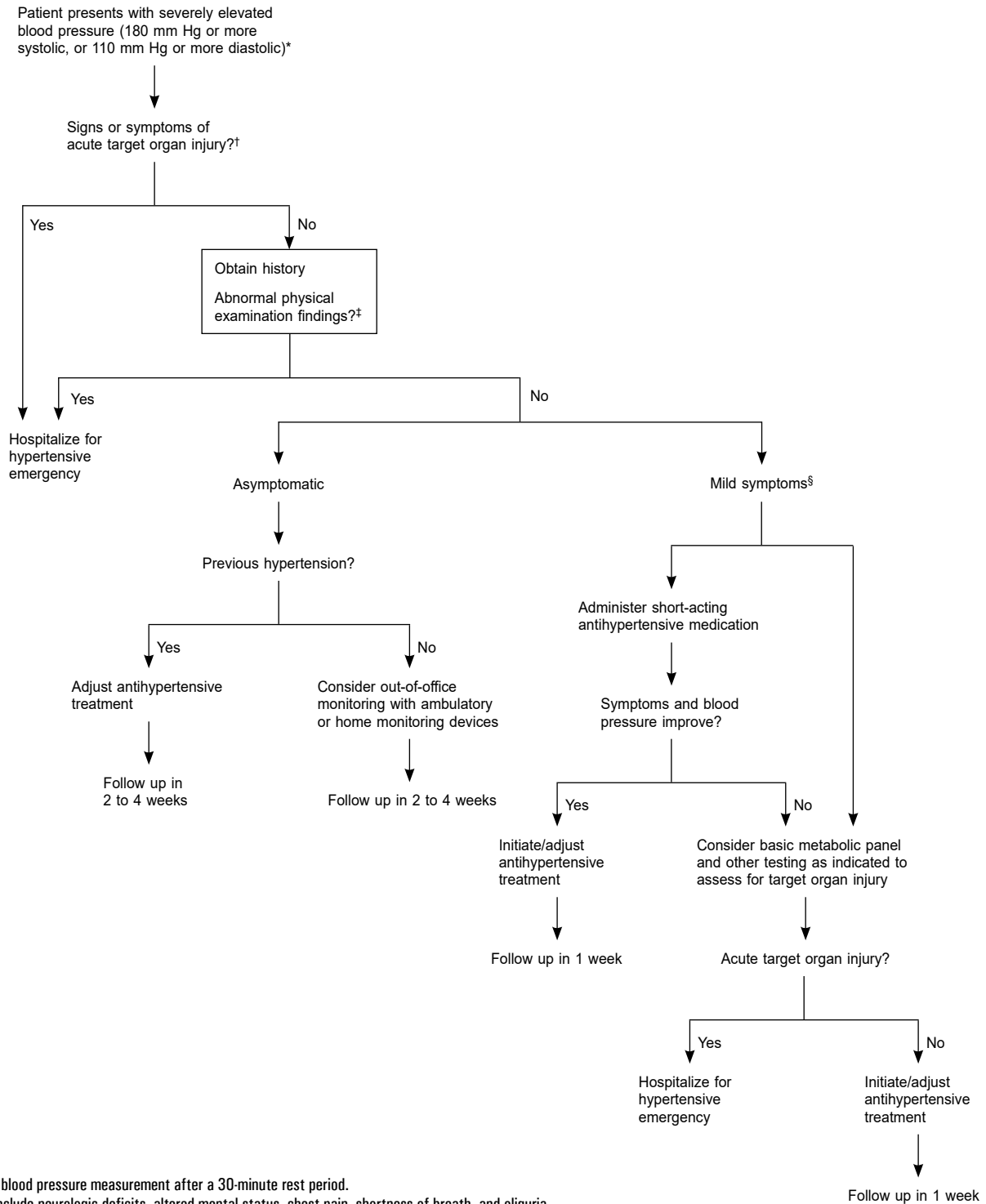


ALGORITHM

Management of Severe Asymptomatic Hypertension



*Repeat blood pressure measurement after a 30-minute rest period.

†These include neurologic deficits, altered mental status, chest pain, shortness of breath, and oliguria.

‡New sensory/motor deficits, arteriolar hemorrhage/papilledema, S3 heart sound, rales, jugular venous distention, pulsating abdominal bruit.

§Headache, lightheadedness, dyspnea, anxiety, epistaxis, nausea, palpitations.

Source: Adapted from Am Fam Physician. 2017;95(8):492-500.